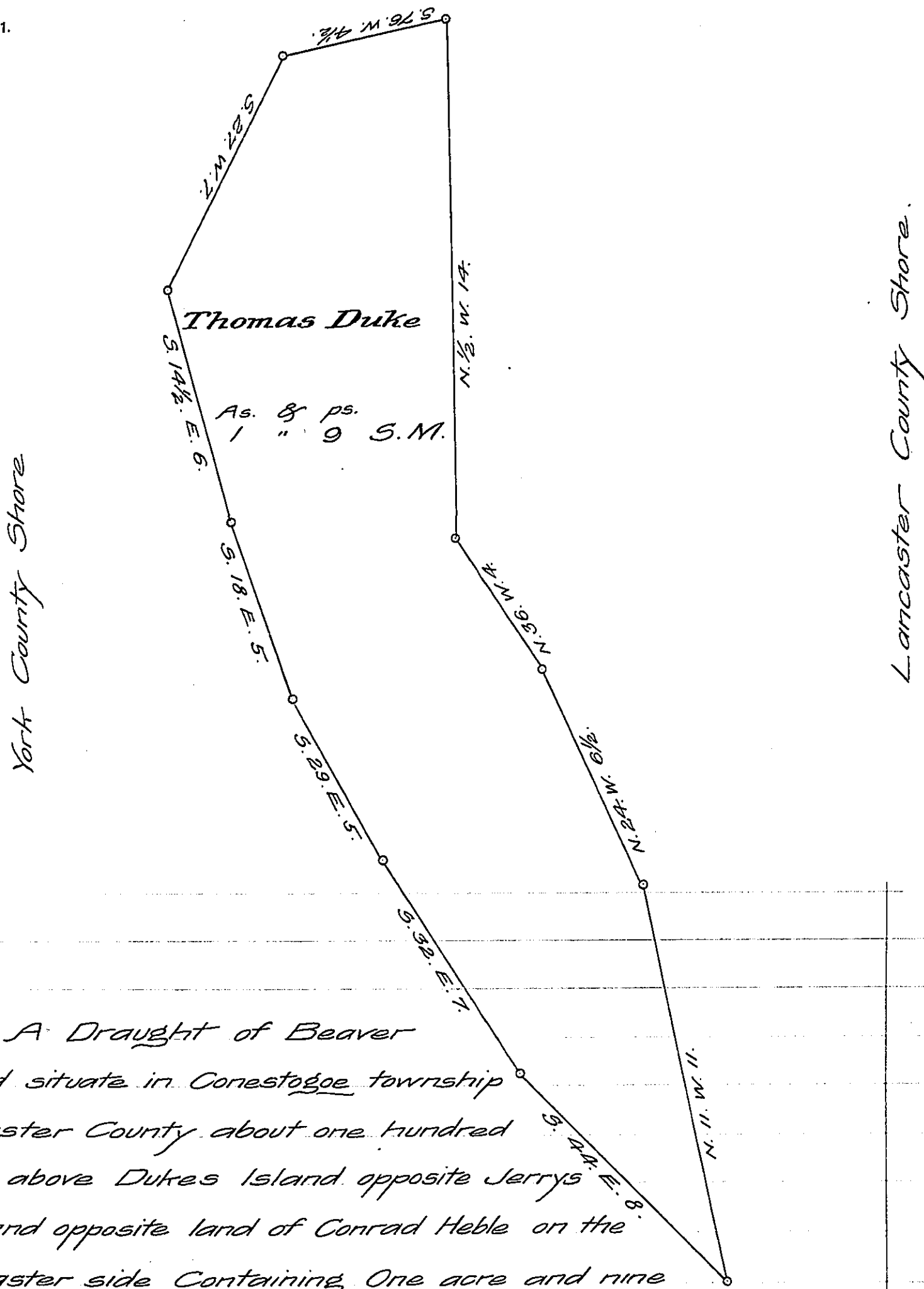


FORM No. 1.



A Draught of Beaver Island situate in Conestogoe township Lancaster County about one hundred yards above Dukes Island opposite Jerrys falls and opposite land of Conrad Heble on the Lancaster side Containing One acre and nine perches Strict Measure surveyed in pursuance of a Warrant dated the 18th day of November A.D. 1818 granted to Thomas Duke p^r Jacob Hishman D.S.

*To Jacob Spangler Esq^r }
 Surveyor General }*

IN TESTIMONY that the above is a copy of the original remaining on file in the Department of Internal Affairs of Pennsylvania, made conformably to an Act of Assembly approved the 16th day of February 1833, I have hereunto set my hand and caused the Seal of said Department to be affixed at Harrisburg, this thirteenth day of December 1907.

Henry Houder
 Secretary of Internal Affairs.